



SHELTERTECH

SP SERIES SINGLE-PIPE SHELTERS



SHELTERTECH

THE WORLD'S LEADER IN SHELTER STORAGE SOLUTIONS



WHY CHOOSE SHELTERTECH BUILDINGS?

Built to order and ready to assemble — ShelterTech SP Series offers the greatest number of size options and roof styles in its class; allowing you to design a unit for your specific application.

The entire ShelterTech series is proudly made in the USA, using US certified hot-dipped galvanized steel.

Each of the SP Series buildings are wind and snow load rated when properly anchored, and meet NFPA 701 fire rating standards.

ShelterTech buildings provide several distinct advantages over other storage and facility options:

- **STRENGTH** - Our shelters are designed to take on tough weather, and are made to withstand the elements.
- **EASE OF INSTALLATION** - ShelterTech structures can be assembled in a matter of days, not weeks or months.
- **PRICE** - ShelterTech products can address your needs for a fraction of the cost of a steel, wood or concrete block structure.
- **MINIMAL FOUNDATION REQUIREMENTS** - Unlike other alternatives, a simple foundation of a concrete slab, concrete piers or pre-cast blocks will satisfy most foundation requirements.
- **EXPANDABLE** - If more space is required, adding to your existing structure is easy, affordable and won't interrupt your business.
- **PORTABLE** - When necessary, a ShelterTech structure can be easily disassembled and relocated to a new location.

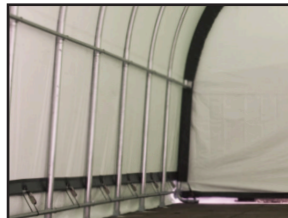
SP SERIES FEATURES

We keep quality high and costs low by making our all-weather shelters in our company-owned USA plants.

ShelterTech covers are available in a variety of colors and grades. Choose from Heavy Duty PVC and Ultra Duty PVC covers in grey, green tan and white. Standard translucent are also available.



High strength ratchet and straps keep cover tight and secure.



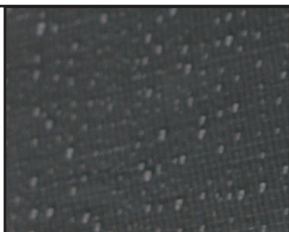
Hot air-fused seams are waterproof, unlike stitched seams, which can leave small holes that will leak.



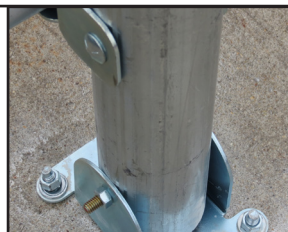
Patented ShelterLock™ stabilizers add rock-solid strength and stability to the frame.



Fire-rated, tear resistant, UV-treated, waterproof fabric provides years of protection.



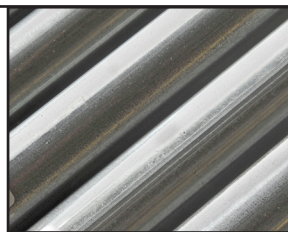
Bolted connections lock securely for sturdier construction and increased wind loads.



Pivoting foot plate design makes installation a breeze, even on uneven terrain.



Frame undergoes hot dipped galvanization process, bonding the steel to zinc for maximum corrosion and rust resistance inside and out.



COVER OPTIONS† & WARRANTY

FABRIC COLOR



Gray



Green



Tan



White

FABRIC WEIGHT

* **Heavy Duty PVC:** 14.5 oz. Gray, Green, Tan, White

* **Ultra Duty PVC:** 21.5 oz. Green, White

† All fabric weight calculations are in oz. per m².

† Our covers are made strong and UV treated inside and out for maximum protection.

* Fire rated FR fabric are NFPA 701 compliant.

WARRANTY

	Cover	Door Panels	Frame
Heavy Duty PVC	10 years Prorated	3 years Prorated	3 years Prorated
Ultra Duty PVC	15 years Prorated	3 years Prorated	3 years Prorated



SP SERIES – ROUND



Our most popular roof style, the Round style is the most effective at shedding the elements. The Round Series includes the greatest variety of width options of the SP Series, making it extremely adaptable.

SIZE OPTIONS & SPECS

Custom lengths available in 5' increments.

1-5/8" All steel frame (12' W)

2-7/8" All steel frame (14' - 30' W)

Easy Hook™ anchors (2 per rib)

Zippered front door, solid back panel

Alternative anchors sold separately



WIND & SNOW LOAD RATED

Width	Height	Wind	Snow
12	8	105	55
	10	85	50
14	7	180	120
	9	180	120
	11	135	90
	13	115	75
	15	95	70
	17	80	65
16	8	180	120
	10	175	95
	12	135	75
	14	100	70
18	9	180	95
	11	160	80
	13	120	60
	15	100	55
20	10	180	75
	12	150	65
	14	105	55
	16	95	50
22	9	180	70
	11	175	60
	13	135	55
	15	115	49
	17	95	40
24	10	180	65
	12	155	55
	14	120	50
	16	105	45
	18	90	39
26	11	165	55
	13	145	49
	15	120	44
	17	100	39
	19	85	34
28	12	150	49
	14	135	42
	16	120	36
	18	90	32
30	11	160	43
	15	125	37
	17	105	33
	19	90	30

* Wind and snow loads given are for reference only and assume a securely anchored frame according to local building codes and ordinances. These have been calculated using combined snow and wind load provisions in accordance with ASCE 7-05 based on an unoccupied, fully enclosed building. Local code requirements vary by location; Conformance to local codes is the responsibility of the purchaser.

SP SERIES - PEAK



The Peak style frame originates from the classic house gable and is designed for ease of installation and storage shelter versatility.

SIZE OPTIONS & SPECS

Custom lengths available in 4' increments.

1-5/8" All steel frame (12' W)

2-3/8" All steel frame (14' - 24' W)

Easy Hook™ anchors (2 per rib)

Zippered front door, solid back panel

Alternative anchors sold separately



WIND & SNOW LOAD RATED

Width	Height	Wind	Snow
12	8	95	39
	10	75	36
14	10	160	75
	12	125	55
	14	100	50
	16	85	45
16	10	130	55
	12	100	45
	14	85	40
	16	70	40
18	11	115	38
	13	90	34
	15	75	33
	17	65	31
20	11	120	37
	13	90	32
	15	75	30
	17	60	30
22	12	125	35
	14	105	31
	16	85	29
	18	70	27
24	12	120	29
	14	100	27
	16	90	25
	18	75	18

* Wind and snow loads given are for reference only and assume a securely anchored frame according to local building codes and ordinances. These have been calculated using combined snow and wind load provisions in accordance with ASCE 7-05 based on an unoccupied, fully enclosed building. Local code requirements vary by location; Conformance to local codes is the responsibility of the purchaser.

SP SERIES - BARN



A ShelterLogic innovation, the Barn style up to 20 ft. wide offers an overall increase in cubic storage space and more usable headroom.

SIZE OPTIONS & SPECS

Custom lengths available in 4' increments.

1-5/8" All steel frame (12' W)
 2-3/8" All steel frame (15'- 30' W)
 Easy Hook™ anchors (2 per rib)
 Zippered front door, solid back panel
 Alternative anchors sold separately



WIND & SNOW LOAD RATED

Width	Height	Wind	Snow
12	9	110	45
	11	80	38
15	11	150	65
	14	100	55
	17	75	50
20	12	130	39
	15	90	34
	18	70	30
25	14	175	55
	17	95	40
	20	75	33
30	15	135	40
	18	90	30
	21	75	26



* Wind and snow loads given are for reference only and assume a securely anchored frame according to local building codes and ordinances. These have been calculated using combined snow and wind load provisions in accordance with ASCE 7-05 based on an unoccupied, fully enclosed building. Local code requirements vary by location; Conformance to local codes is the responsibility of the purchaser.





ANCHORS AND PROPER ANCHORING

Your ShelterTech building comes equipped with Easy Hook anchors - one for each leg. However, our Easy Hook may not necessarily be the best anchor for your foundation. Please refer to the chart below for alternative anchoring methods.

**CHOOSE
YOUR:**

Anchor Method \ Foundation Type							
	PACKED SOIL	SAND	GRAVEL	CLAY	ASPHALT	CONCRETE	WOOD
Easy Hook™	✓	✓	✓	✓	✓		
Ratchet-Tite Easy Hook™	✓	✓	✓	✓	✓		
ShelterAuger™						✓	
Concrete Anchor <small>Not Sold by ShelterLogic</small>						✓	
Lag Bolts <small>Not Sold by ShelterLogic</small>							✓

ShelterTech and ShelterLogic offer a variety of anchor products you can choose from. After evaluating the foundation type, consider choosing one of our available anchors.

Easy Hook™		Ratchet-Tite Easy Hook™		ShelterAuger™		Concrete Anchor & Lag Bolts	
	#10036		#10471		#10075		#10075
	Standard secure anchoring for all soil conditions. Better in clay, hard packed or rocky soil.		Best option for any soil condition. Allows for easy periodic tension maintenance using the RatchetTite™ ratchets. Better in clay, hard packed or rocky soil.		ShelterAuger™ can be used with ShelterTech buildings when embedding anchors in concrete foundations.		For permanent placement on: ① cement pad, pony wall ② wood deck. Available at hardware store.

**DISCLAIMER: Please refer to your manual for information on assembly and anchoring. Proper anchoring is the responsibility of the consumer. **

ACCESSORIES

Did You Know: We offer accessories for your ShelterTech building? Choose from a variety of items to add on to your custom order.



#800984 Heavy Duty Roll-Up Door Kit

** For increased shelter ventilation, more functionality, easier access and greater convenience, consider purchasing these shelter*



#00802 E-Z Zip-Up Kit



#14610 ShelterShelf Brackets



#11300 Automatic Shelter Vent Kit

HAVE QUESTIONS? CONTACT SHELTERTECH SALES TODAY

Email: sheltertech@shelterlogic.com

Phone: 888-781-1418

www.shelterlogic.com/shop/sheltertech

150 Callender Road, Watertown, CT 06795

